

# 1500

W GEORGIA ST

VANCOUVER | BC

**BELOW MARKET RATES**

**MOVE-IN READY SUBLEASE**

**SHORT TERM**

HT  
FG

**ALAIN RIVERE**  
SALES ASSOCIATE

**604 662 5110**  
[alain.rivere@cbre.com](mailto:alain.rivere@cbre.com)



## PROPERTY DETAILS

SUITE	880
AREA (APPROX.)	1,897 SF
SUBLEASE RATE	Contact Agent
OP. COSTS	\$20.52 PSF (est.)
AVAILABILITY	Aug 1, 2018
TERM	Nov 30, 2020

## BUILDING FEATURES

20 storey landmark building in downtown Vancouver

Fitness facilities, showers and lockers

Common boardroom, Secure bike storage, On-site café

Walking distance to financial district, restaurants and shopping along Robson and Denman Streets, Coal Harbour and Stanley Park seawall

24/7/365 accessibility

Professionally managed by SDM Properties

## SPACE FEATURES

Floor to ceiling windows, with great views

Recently renovated, modern finishes and use of glass.

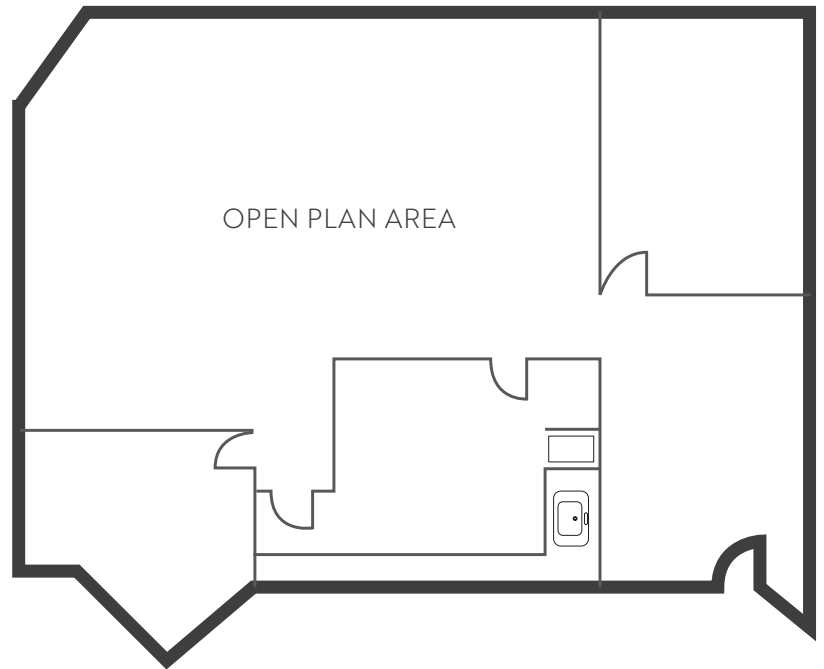
One Meeting room, boardroom and Office

Furniture negotiable

Kitchenette

Large Open Plan area

# 1500 W GEORGIA ST VANCOUVER | BC

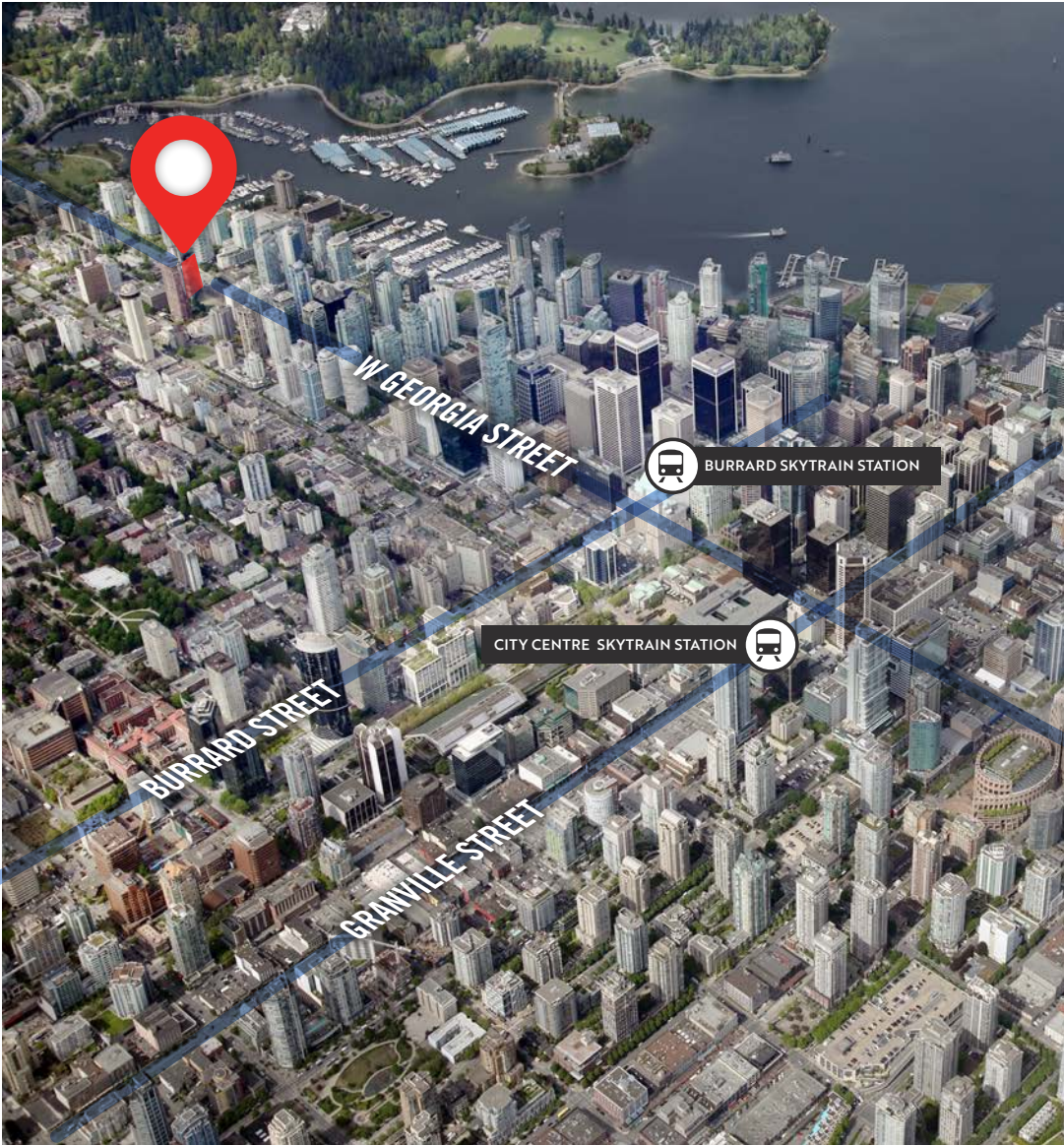


NOT TO SCALE





# 1500 W GEORGIA ST VANCOUVER | BC



## THE LOCATION

On the corner of Nicola and West Georgia Streets, this 20-storey high-rise building is located in the West End neighborhood in Vancouver, short walk to the Waterfront SkyTrain Station, offering service on the Canada, Expo and Millennium Lines, the SeaBus Terminal, West Coast Express, and transit hub for public buses.



SOURCE: WALKSCORE.COM

HT  
FG

**ALAIN RIVERE**  
SALES ASSOCIATE  
ADVISORY & TRANSACTION SERVICES  
**604 662 5110**  
alain.rivere@cbre.com

CBRE Limited | 1021 West Hastings Street | #2500 | Vancouver, BC V6E 0C3 | www.cbre.ca

This disclaimer shall apply to CBRE Limited, Real Estate Brokerage, and to all other divisions of the Corporation, to include all employees and independent contractors ("CBRE"). The information set out herein, including, without limitation, any projections, images, opinions, assumptions and estimates obtained from third parties (the "Information") has not been verified by CBRE, and CBRE does not represent, warrant or guarantee the accuracy, correctness and completeness of the Information. CBRE does not accept or assume any responsibility or liability, direct or consequential, for the Information or the recipient's reliance upon the Information. The recipient of the Information should take such steps as the recipient may deem necessary to verify the Information prior to placing any reliance upon the Information. The Information may change and any property described in the Information may be withdrawn from the market at any time without notice or obligation to the recipient from CBRE. CBRE and the CBRE logo are the service marks of CBRE Limited and/or its affiliated or related companies in other countries. All other marks displayed on this document are the property of their respective owners. All Rights Reserved. Mapping Sources: Canadian Mapping Services canadamapping@cbre.com; DMTI Spatial, Environics Analytics, Microsoft Bing, Google Earth.

**CBRE**