

FOR LEASE

4,594 sq. ft.

Suite 310, 910 Richards St, Vancouver, BC
Move-In Ready Yaletown Office



Alain Rivere
Personal Real Estate Corporation
alain.rivere@cbre.com | 604-662-5110

CBRE

HT
FG

THE HIGH
TECHNOLOGY
FACILITIES GROUP

PROPERTY DETAILS

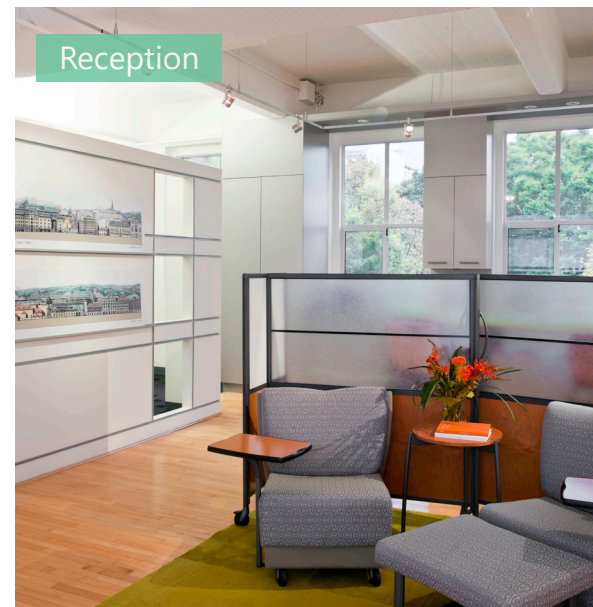
Suite	310
Available Area	4,594 sq.ft.
Net Rent	Contact listing agent
Op. Costs	\$9.05 per sq.ft. (estimate)
Available	January 1, 2019

THE BUILDING

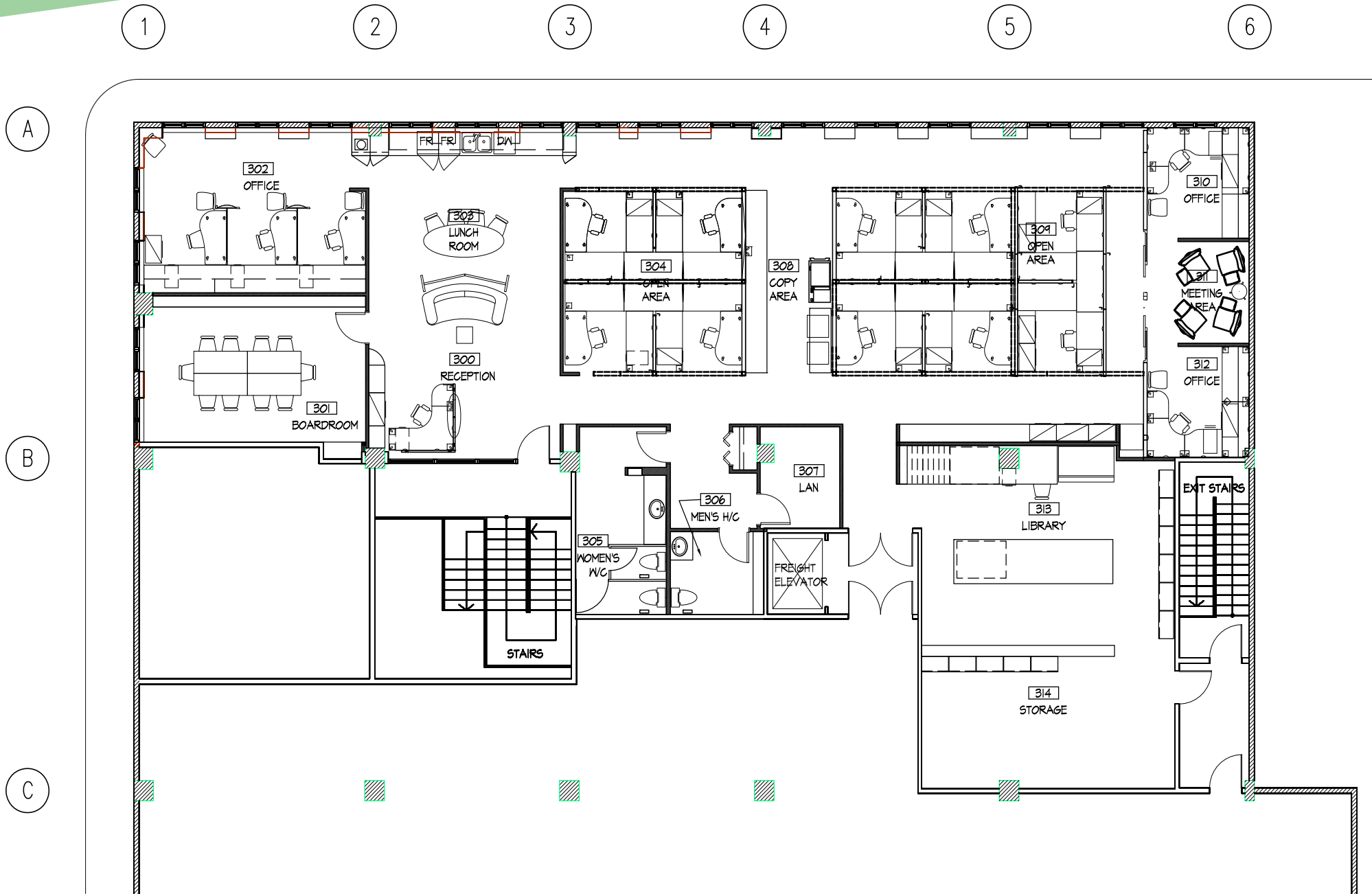
This fantastic character building is located on the corner of Richards and Smithe Streets. This great Yaletown location offers convenient car, bike and public transit access. Yaletown offers a great social atmosphere with its abundance of coffee shops, boutique stores, trendy restaurants and bars all within walking distance.

HIGHLIGHTS

- Stylish character building
- Corner unit
- Improved move-in ready space
- High exposed ceilings
- Close to transit - Expo Line and Canada Line
- Large bright windows
- Furniture available
- Large open area
- Walkable, bikeable, car, and transit friendly
- Convenient Yaletown location at Richards and Smithe Street



FLOOR PLAN



910 RICHARDS ST. SURROUNDING AMENITIES

Food

- A&W
- Blue Water Cafe
- Boston Pizza
- Cactus Club
- Chipotle Mexican Grill
- Earls Kitchen + Bar
- Five Guys
- Glowbal
- Honolulu Coffee
- Incognito Coffee
- JJ Bean Coffee Roasters
- Marutama Ramen
- McDonald's
- Medina
- Minami
- Nero Waffle Bar
- The Keg Steakhouse + Bar
- Tacofino
- Tractor Foods
- Waves
- Yaletown Brewing

Services

- Bank of Montreal
- CIBC
- Choices
- IGA
- Nesters Market
- Royal Bank
- Shoppers Drug Mart
- Staples
- Urban Fare

Fitness

- Barre Fitness
- CrossFit BC
- Ride Cycle Club
- SoulCycle
- Steve Nash Fitness
- YOGA Yaletown

Alain Rivere

Personal Real Estate Corporation

alain.rivere@cbre.com | 604-662-5110

DOWNTOWN CORE

YALETOWN

CAMBIE ST. BRIDGE

CBRE

HT
FG

THE HIGH
TECHNOLOGY
FACILITIES GROUP