

FOR SUBLEASE

CENTRAL DOWNTOWN CORNER OFFICE SPACE

1510-800 W Pender St, Vancouver, BC



CONTACT ME

Alain Rivere

Personal Real Estate Corporation
604 662 5110 | alain.rivere@cbre.com



THE HIGH
TECHNOLOGY
FACILITIES GROUP

CBRE

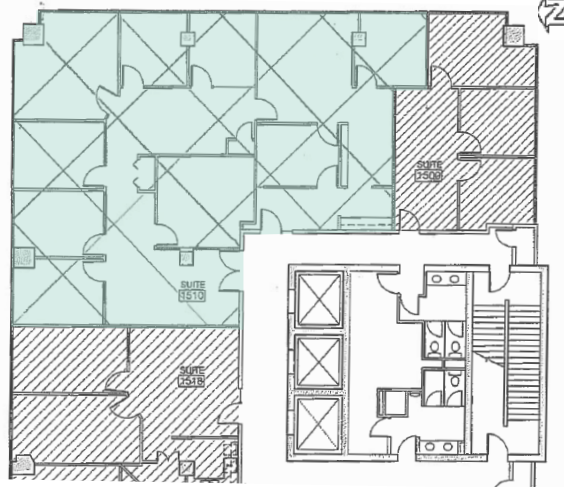
HIGHLIGHTS

- Elevator exposure
- Large windows and lots of natural light
- 15th floor, corner unit (North & East facing)
- Efficient layout
- 7 offices, boardroom and meeting room
- Reception, open area and kitchen
- Improvements in great condition
- Furniture available
- Easy access to transit as well as numerous amenities in the neighborhood

PROPERTY DETAILS

Suite	1510
Available Area	2,773 sq. ft.
Sublease Rate	Contact Agent (Below Market!)
Op. Costs	\$18.80 per sq. ft. (2019 Estimate)
Occupancy	Immediate
Sublease Expiry	January 31, 2021 Additional Term Available

Floor Plan | 2,773 sq. ft.



THE LOCATION

Centrally located in Downtown Vancouver, 800 W Pender offers easy access to transit as well as numerous amenities in the neighbourhood. It is a 5 minute walk to Burrard SkyTrain Station and a 5 minute walk to Waterfront Station, connecting to the ExpoLine, Canada Line, West Coast Express, and SeaBus.

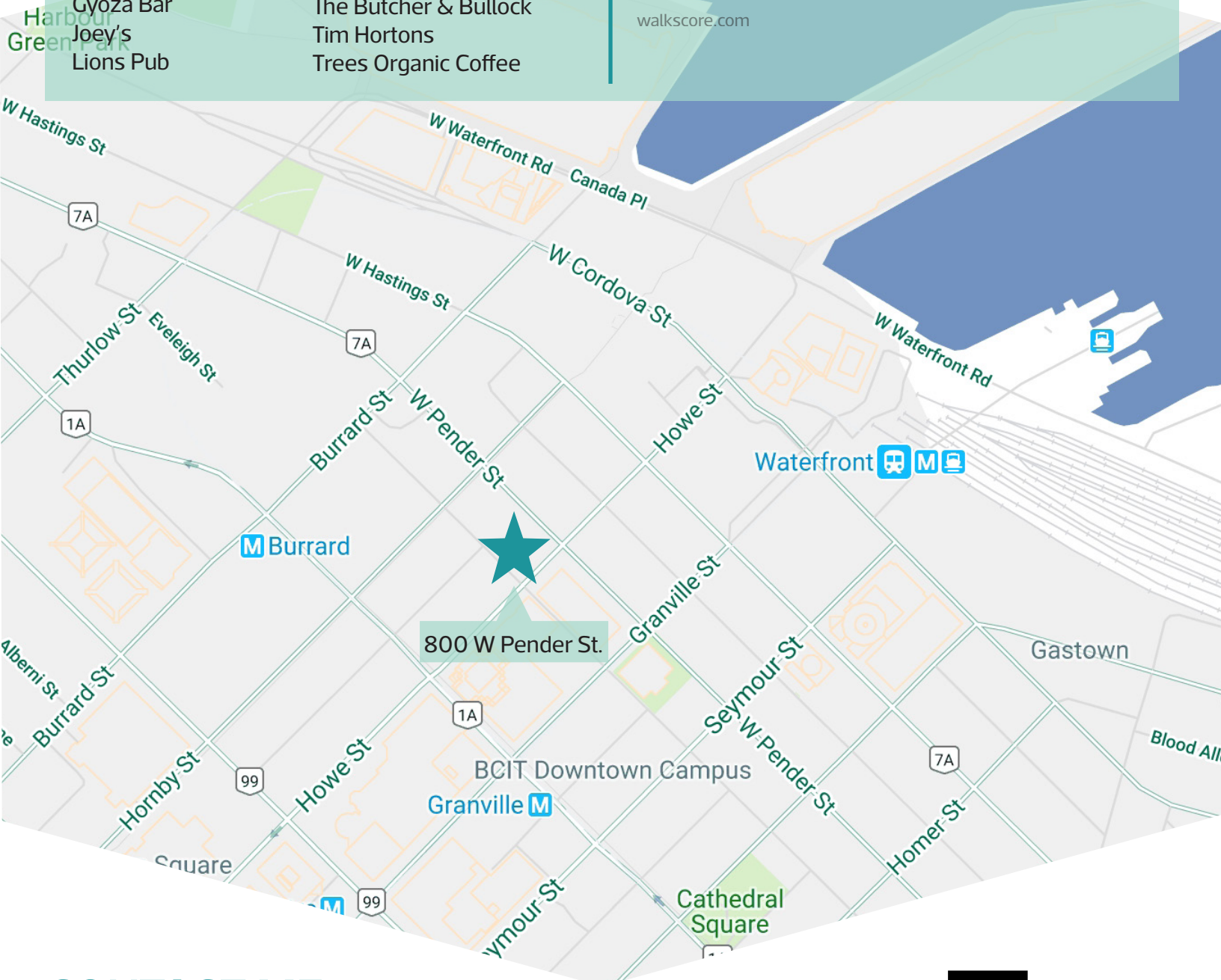
Nearby Amenities

- Cactus Club
- Caffe Artigiano
- Cartem's Donuts
- Gyoza Bar
- Joey's
- Lions Pub
- Pacific Centre Mall
- Scoozis Bar & Grill
- The Blackbird Public House
- The Butcher & Bullock
- Tim Hortons
- Trees Organic Coffee

Walk Score



walkscore.com



CONTACT ME

Alain Rivere

Personal Real Estate Corporation
604 662 5110 | alain.rivere@cbre.com

