

FOR SUBLEASE

555 ROBSON STREET
VANCOUVER, BC

Central Downtown Creative Office Space



CONTACT

Kevin Nelson, Personal Real Estate Corporation
kevin.nelson@cbre.com
604-662-5155

CBRE

HT
FG

THE HIGH
TECHNOLOGY
FACILITIES GROUP

STAGED UPTAKE OF A LARGE BLOCK, CREATIVE TECH SPACE

THE OPPORTUNITY

With a magnificent 6-storey atrium, and a living green wall on the east side of the building, 555 Robson has been completely rebuilt to a state-of-the-art structure, with system upgrades, cutting edge interior design, modern atrium, and thoughtful common areas and gathering spaces.

- Generous mix of open plan and private offices
- Energy efficient windows, and LED lights
- 12' - 14' ceilings
- The 6th and 7th floor are fully improved with a mix of open plan north spaces and private offices
- Skybox meeting rooms projected into the atrium

AVAILABLE AREA

Available Q1 2020

6th Floor	13,681 SF
7th Floor	13,672 SF
Total	27,353 SF

Available Q3 2022

4th, 5th Floor, & Atrium	30,160 SF
--------------------------	-----------

TOTAL AREA

57,513 SF

PROPERTY DETAILS

Available	March 1, 2020
Sublease Rate	Contact Agent
Taxes & Ops	\$18.13 PSF (2019 est.)
Furniture	Majority Included
Expiry	February 28, 2028
Parking	10 Stalls Available at Market Rates

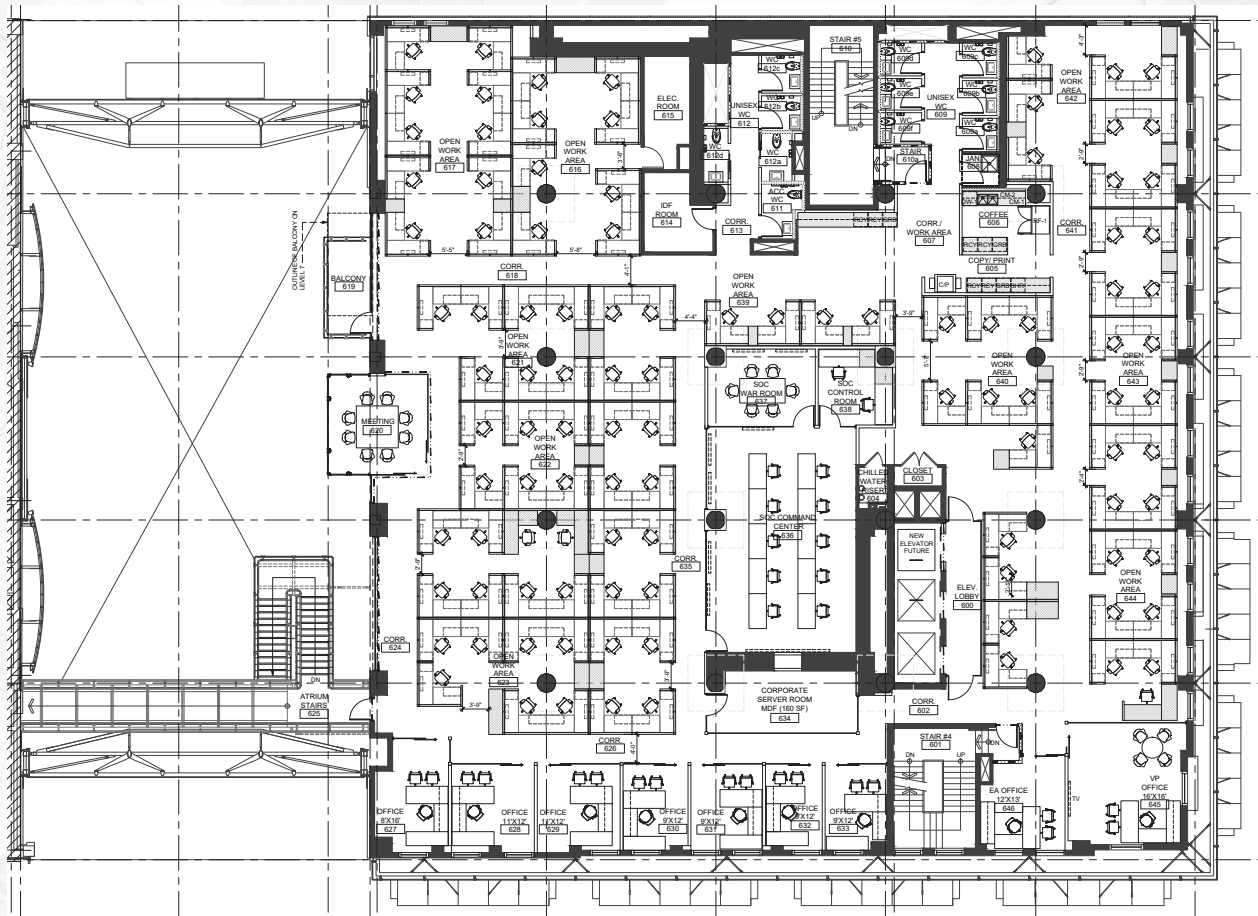


FLOOR PLANS

6th Floor

13,681 SF

- 9 private offices
- 1 large boardroom
- 1 internal meeting room
- 1 skybox meeting room overlooking atrium
- Open space with 104 workstations
- Coffee Area



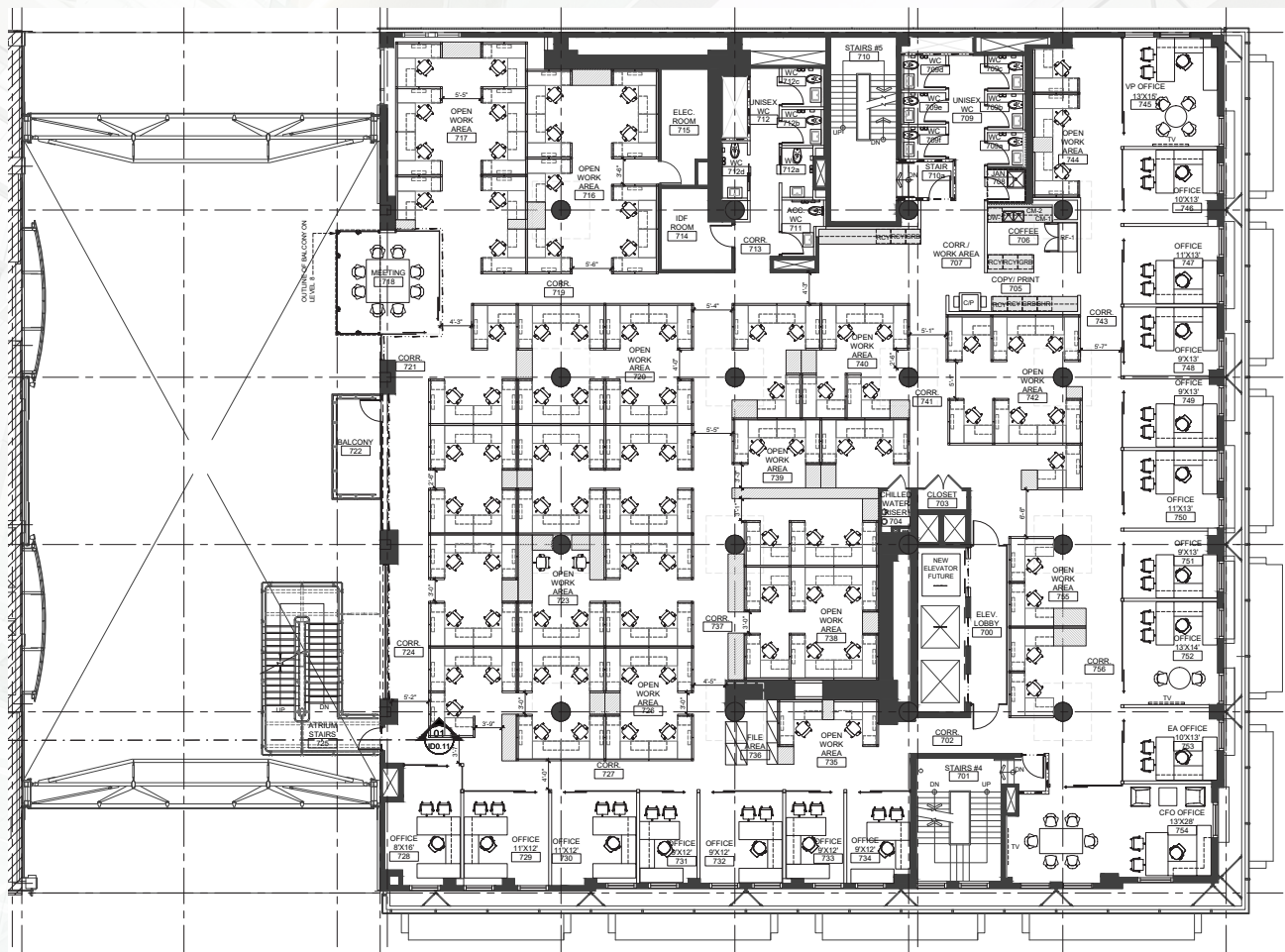
FOR SUBLEASE: 555 ROBSON STREET

FLOOR PLANS

7th Floor

13,672 SF

- 17 private offices including a large corner executive office
- Open space with 98 workstations
- 1 skybox meeting room overlooking atrium
- Coffee area



FOR SUBLEASE: 555 ROBSON STREET

LOCATION

Located on the northeast corner of Robson Street and Seymour Street, 555 Robson Street is surrounded by a vibrant amenity base within immediate walking distance that includes a Buro Coffee and Vitasave, a health food/smoothie store, operating in the lobby. In addition various shopping options, service retail, restaurants, bars, and fitness facilities surround 555 Robson Street, including Pacific Centre Mall (one of the largest shopping centres in North America) and the renowned retail of Robson Street.

Just steps away from both the Canada Line and the Expo / Millennium Sky Train Station, the building enjoys the highest possible transit and walkability scores.



100 Walker's Paradise



88 Very Bikeable



100 Rider's Paradise

Nearby Food & Cafes

Bentoya
Blenz Coffee
Buro Coffee
Chopped Leaf
Dunn's

Five Guys
Incognito Coffee
India Gate
JAPADOG
Jinya Ramen Bar

Meat and Bread
Medina
Red Burrito
Ryuu Japanese
Starbucks

Tableau
Tim Hortons
Tractor Foods
Viitasave
Yah Yah Ya Ramen

This disclaimer shall apply to CBRE Limited, Real Estate Brokerage, and to all other divisions of the Corporation; to include all employees and independent contractors ("CBRE"). The information set out herein, including, without limitation, any projections, images, opinions, assumptions and estimates obtained from third parties (the "Information") has not been verified by CBRE, and CBRE does not represent, warrant or guarantee the accuracy, correctness and completeness of the Information. CBRE does not accept or assume any responsibility or liability, direct or consequential, for the Information or the recipient's reliance upon the Information. The recipient of the Information should take such steps as the recipient may deem necessary to verify the Information prior to placing any reliance upon the Information. The Information may change and any property described in the Information may be withdrawn from the market at any time without notice or obligation to the recipient from CBRE. CBRE and the CBRE logo are the service marks of CBRE Limited and/or its affiliated or related companies in other countries. All other marks displayed on this document are the property of their respective owners. All Rights Reserved.

Mapping Sources: Canadian Mapping Services canadamapping@cbre.com; DMTI Spatial, Environics Analytics, Microsoft Bing, Google Earth.

CONTACT

Kevin Nelson, Personal Real Estate Corporation
kevin.nelson@cbre.com
604-662-5155

CBRE

HT
FG

THE HIGH
TECHNOLOGY
FACILITIES GROUP