

1110 HAMILTON ST, VANCOUVER, BC

FOR SUBLEASE



2 Full Floors of Yaletown Office Space Available

CONTACT

Blair Quinn, Vice Chairman

Personal Real Estate Corporation

+1 604 662 5161 | blair.quinn@cbre.com

HT
FG

THE HIGH
TECHNOLOGY
FACILITIES GROUP

CBRE

1110 HAMILTON ST, VANCOUVER, BC

FOR SUBLEASE

PROPERTY DETAILS

Floors	4th and 5th Floor	
Area	4th Floor	10,758 sq. ft.
	5th Floor	10,757 sq. ft.
	Total*	21,515 sq. ft.
*Floors can be leased separately		
Asking Rent	Contact Listing Agent	
Ops Costs & Taxes	\$14.83 per sq. ft. (2020 Est.) <i>Janitorial not included</i>	
Available	Immediately	
Sublease Expiry	Flexible	
Furniture	Negotiable	

HIGHLIGHTS

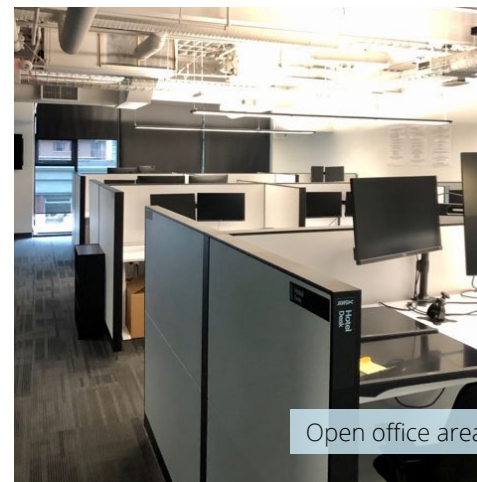
- 2 modern floors in a beautifully restored character Yaletown office building
- Corner building with 3 sided windows
- One large boardroom skylight with retractable blind
- Plug-and-play space, built-out and fully furnished
- Open plan layout
- Internal staircase that connects the two floors
- Mini balcony on 3 sides
- 193 work stations
- 9 meeting rooms
- Reception area
- Large kitchen
- Surrounded by countless restaurants, cafés, and amenities
- Quick 3-minute walk to Yaletown-Roundhouse Canada Line Station



CLICK TO TOUR VIRTUALLY



Meeting room



Open office area



Meeting room



Kitchen & collaboration area

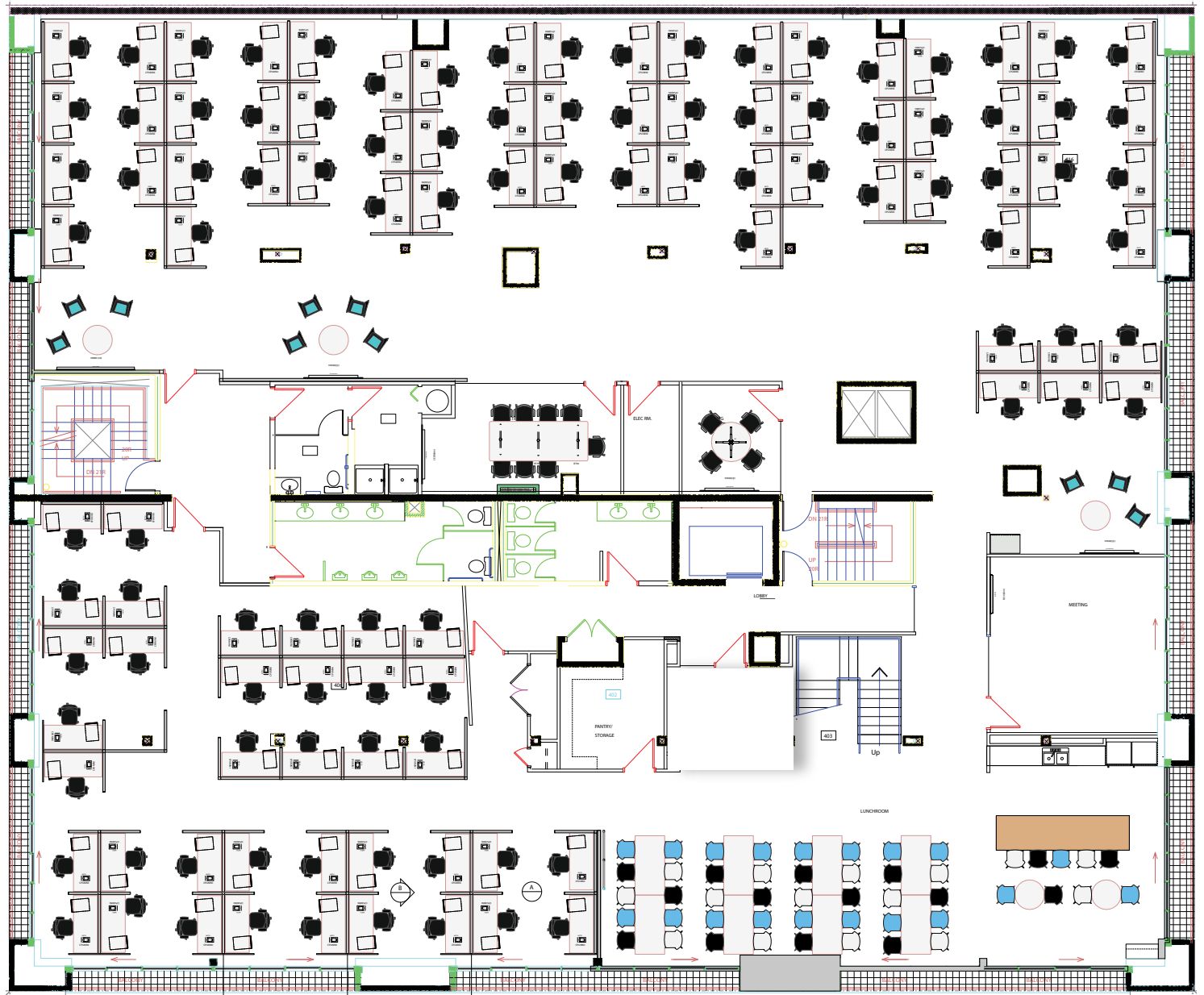
FLOOR PLANS

4TH FLOOR 10,758 SF

- Open plan layout
- 103 workstations
- 3 meeting rooms
- Private mini balconies on 3 sides
- Large kitchen
- Internal staircase connecting to the 5th floor



CLICK TO TOUR
VIRTUALLY

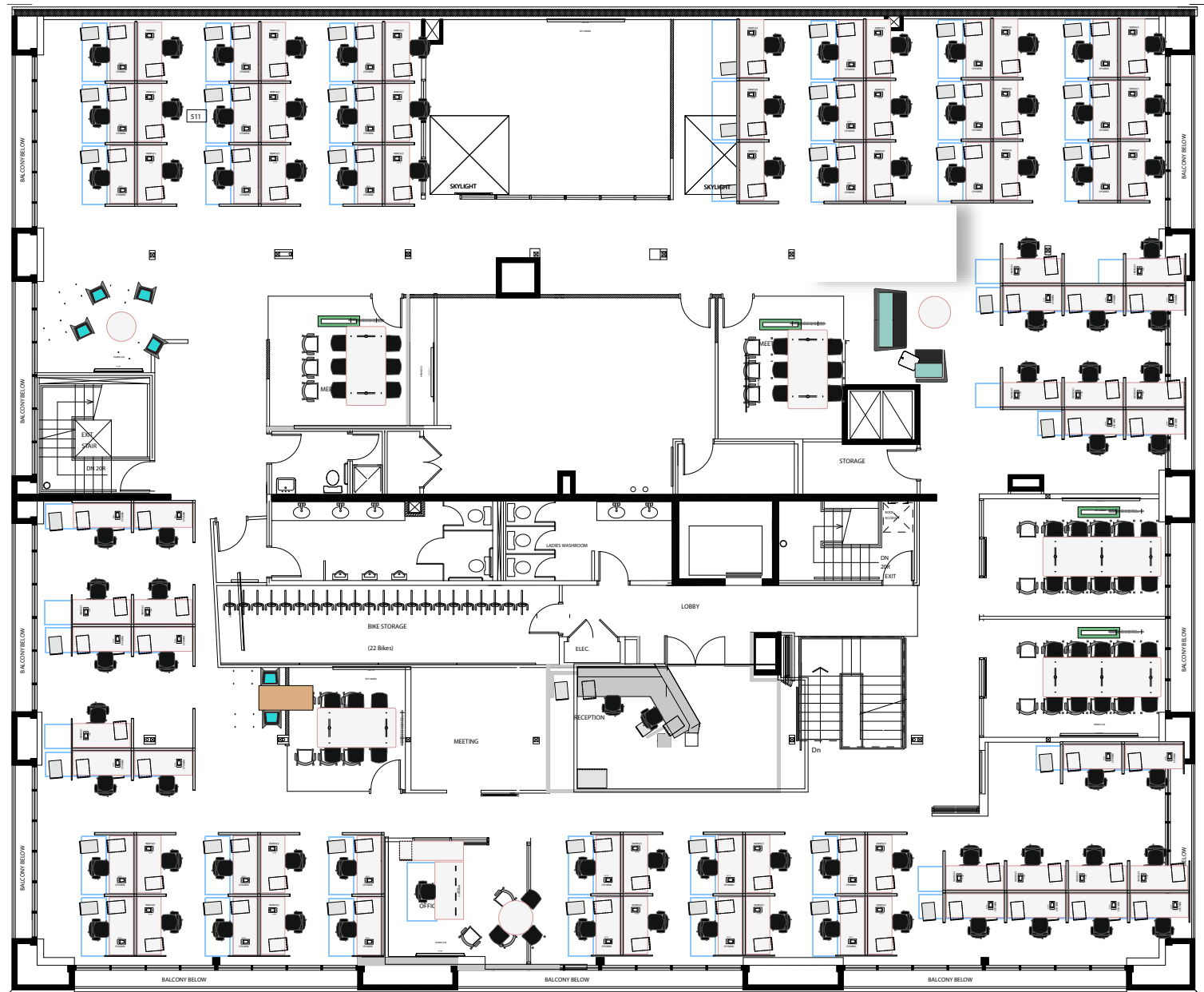


This disclaimer shall apply to CBRE Limited, Real Estate Brokerage, and to all other divisions of the Corporation; to include all employees and independent contractors ("CBRE"). The information set out herein, including, without limitation, any projections, images, opinions, assumptions and estimates obtained from third parties (the "Information") has not been verified by CBRE, and CBRE does not represent, warrant or guarantee the accuracy, correctness and completeness of the Information. CBRE does not accept or assume any responsibility or liability, direct or consequential, for the Information or the recipient's reliance upon the Information. The recipient of the Information should take such steps as the recipient may deem necessary to verify the Information prior to placing any reliance upon the Information. The Information may change and any property described in the Information may be withdrawn from the market at any time without notice or obligation to the recipient from CBRE. CBRE and the CBRE logo are the service marks of CBRE Limited and/or its affiliated or related companies in other countries. All other marks displayed on this document are the property of their respective owners. All Rights Reserved. *Personal Real Estate Corporation Mapping Sources: Canadian Mapping Services canadamapping@cbre.com; DMIT Spatial, Envrionics Analytics, Microsoft Bing, Google Earth.

FLOOR PLANS

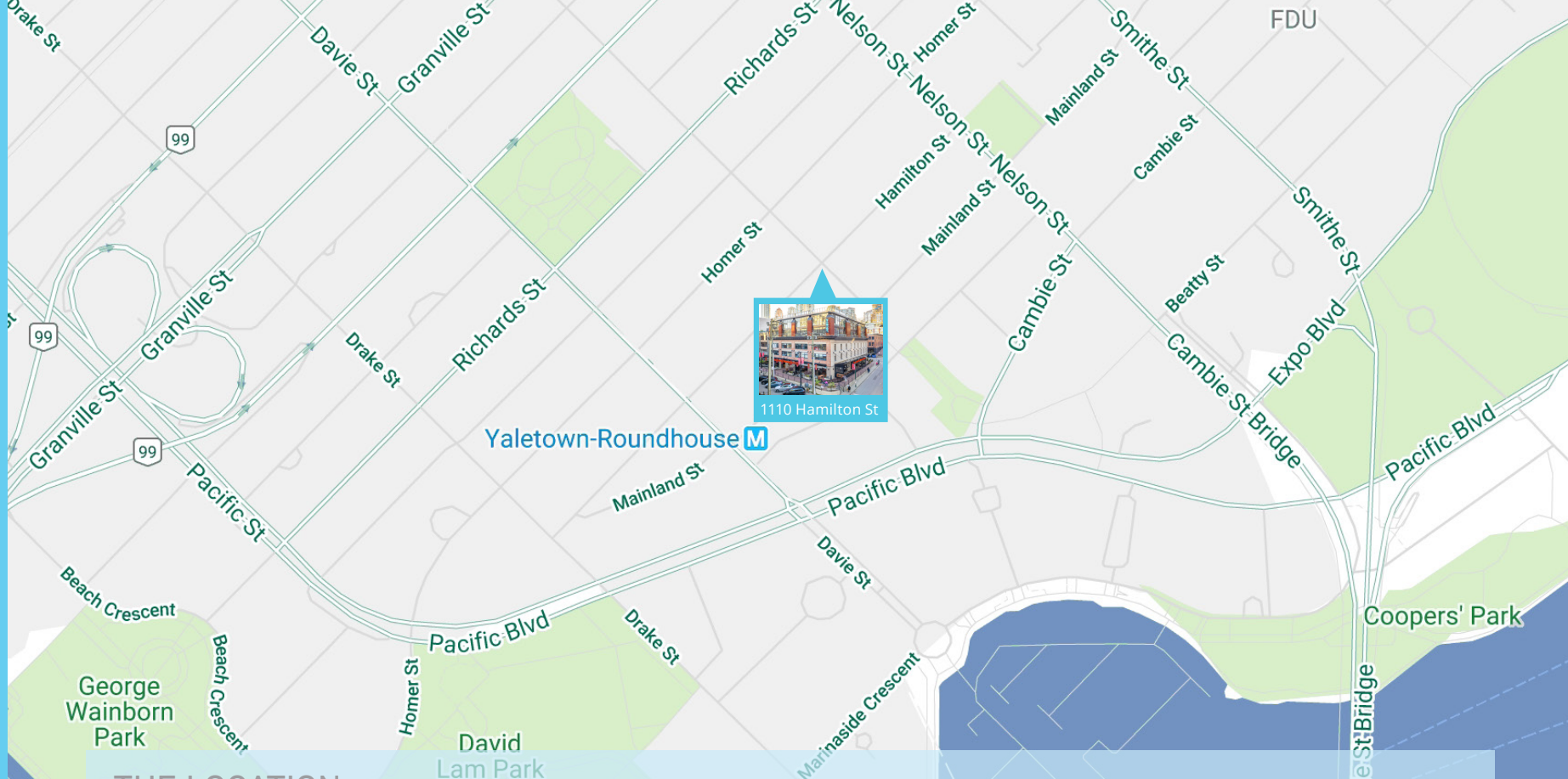
5TH FLOOR 10,757 SF

- Open plan layout
- One large boardroom skylight with retractable blind
- 90 workstations
- 6 meeting rooms
- Private mini balconies on 3 sides
- Reception area
- Internal staircase connecting to the 4th



FOR SUBLEASE

1110 HAMILTON ST, VANCOUVER, BC



THE LOCATION

1110 Hamilton Street is desirably located in the heart of Yaletown. The historic, modernized neighbourhood is home to some of Vancouver's trendiest and most sought-after restaurants, cafes and amenities. The space provides seamless connection to all parts of the Lower Mainland with Yaletown-Roundhouse Skytrain Station a quick 3-minute walk away, the iconic Seawall a 6-minute walk away, and several bus routes that service the area.

NEARBY AMENITIES

Cactus Club
MeeT in Yaletown
Minami
Tacofino
The Flying Pig
The Keg
The New Oxford

The Parlour
Brix & Mortar
Yaletown Brewing Company
JJ Bean Coffee Roasters
Small Victory Bakery
Choices Markets
Shoppers Drug Mart

Bank of Montreal
CIBC
RBC Royal Bank
TD Canada Trust
Barre Fitness
Soul Cycle
YYOGA

WALK SCORE



100

RIDER'S
PARADISE



99

WALKER'S
PARADISE



68

BIKEABLE

walkscore.com

CONTACT

Blair Quinn, Vice Chairman

Personal Real Estate Corporation

+1 604 662 5161 | blair.quinn@cbre.com



THE HIGH
TECHNOLOGY
FACILITIES GROUP

CBRE