

FOR LEASE

NEWLY RENOVATED RICHMOND OFFICE SPACE

#4-11220 VOYAGEUR WAY, RICHMOND, BC



CONTACT

Andre Alie Day
Sales Representative, The HTFG
604-662-5137 | andre.alieday@cbre.com



THE HIGH
TECHNOLOGY
FACILITIES GROUP

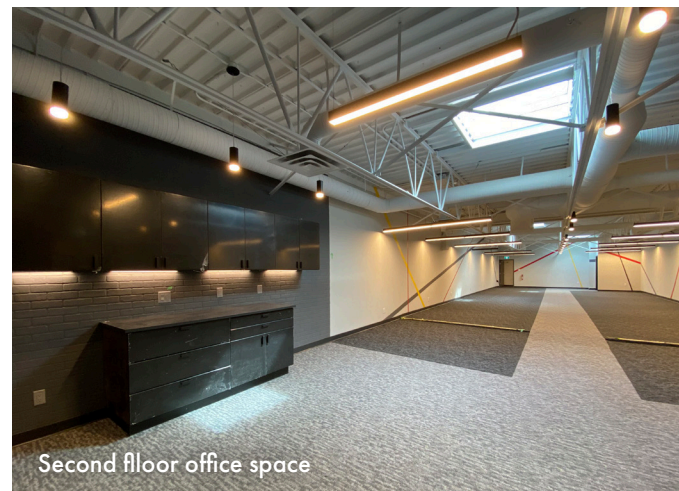
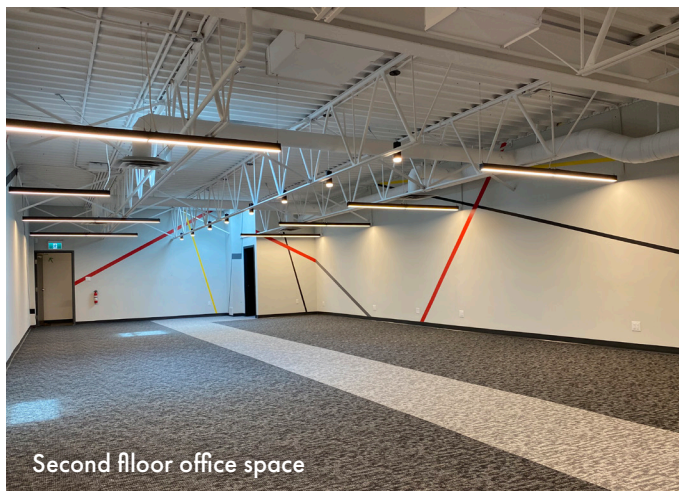


PROPERTY DETAILS

Address	#4-11220 Voyageur Way
Size	3,058 sq.ft. (approx.)
Taxes & Op Costs	\$4.93 per sq.ft. (2020 Est.)
Net Asking Rent	Contact Agent
Zoning	IR1 (Industrial Retail)

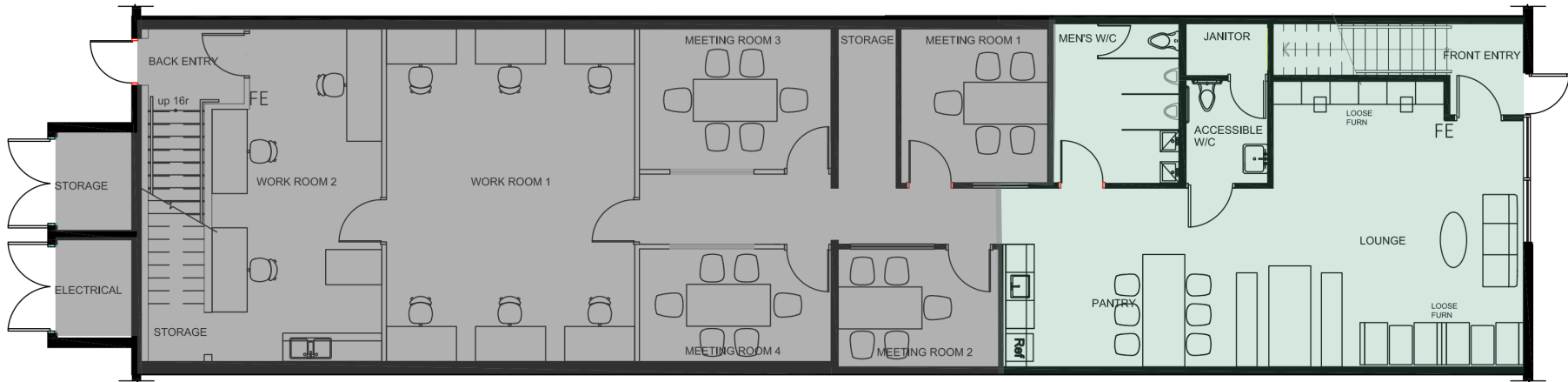
HIGH- LIGHTS

- Brand new renovated office space
- Skylights on second floor
- Open plan office area
- Boardroom
- Shared kitchen/lounge area

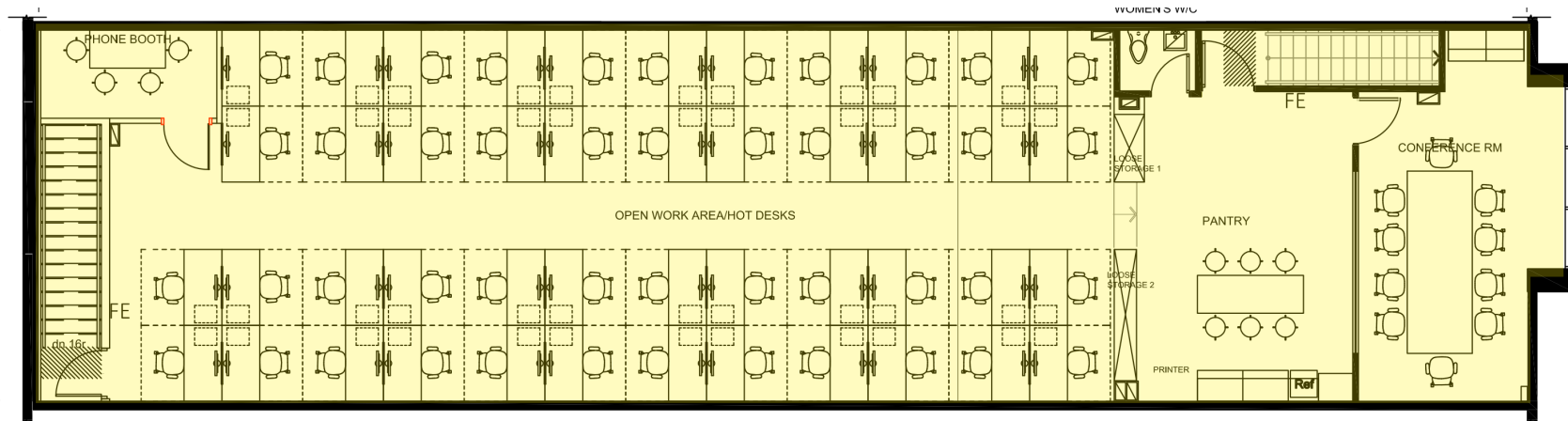


FLOOR PLANS

Level 1



Level 2



Legend

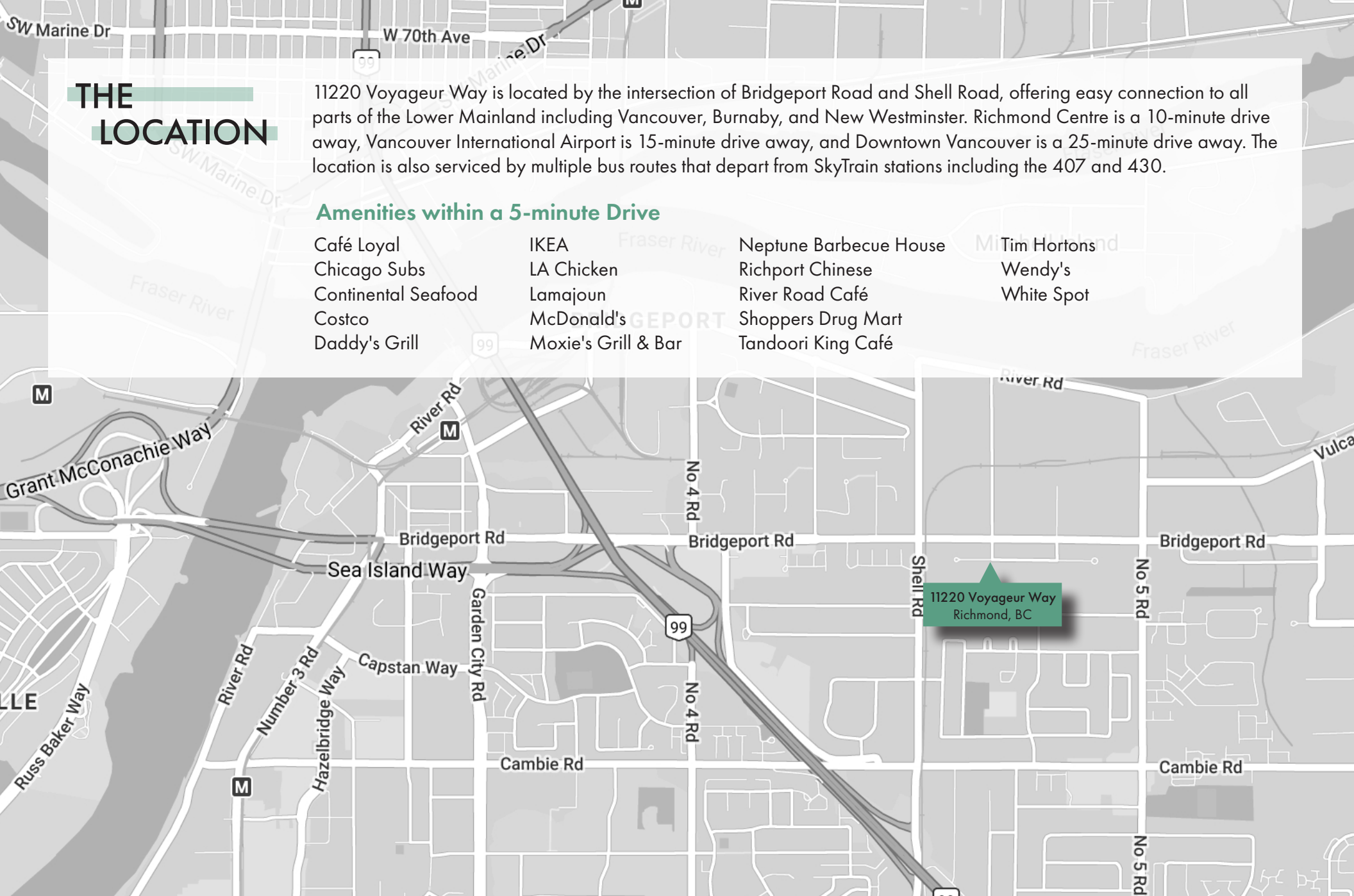
- Occupied
- Shared Space
- Second Floor Space

THE LOCATION

11220 Voyager Way is located by the intersection of Bridgeport Road and Shell Road, offering easy connection to all parts of the Lower Mainland including Vancouver, Burnaby, and New Westminster. Richmond Centre is a 10-minute drive away, Vancouver International Airport is 15-minute drive away, and Downtown Vancouver is a 25-minute drive away. The location is also serviced by multiple bus routes that depart from SkyTrain stations including the 407 and 430.

Amenities within a 5-minute Drive

Café Loyal	IKEA	Neptune Barbecue House	Tim Hortons
Chicago Subs	LA Chicken	Richport Chinese	Wendy's
Continental Seafood	Lamajoun	River Road Café	White Spot
Costco	McDonald's	Shoppers Drug Mart	
Daddy's Grill	Moxie's Grill & Bar	Tandoori King Café	



CONTACT

Andre Alie Day
Sales Representative, The HTFG
604-662-5137 | andre.alieday@cbre.com



THE HIGH
TECHNOLOGY
FACILITIES GROUP

