

FOR SUBLEASE

1177 WEST HASTINGS STREET

SUITE 1630

VANCOUVER, BRITISH COLUMBIA



ABOUT THE BUILDING

1177 WEST HASTINGS STREET

- + 27-storey, Class A office building
- + Situated on the North side of West Hastings Street with attractive city and north shore mountain views
- + Short walking distance from the Convention Centre, Waterfront transportation hub, hotels, restaurants, Sea Wall and a wealth of other amenities
- + Underground parking
- + Bike and shower facilities



PROPERTY DETAILS

SUITE	1630
RENTABLE AREA	Approx. 3,600 sq. ft.
ASKING RATE	Below Market
TAXES & OPS PER SQ.FT.	\$19.49 (2016 estimate)
SUBLEASE TERM	April 29, 2018
OCCUPANCY	November 2016

FOR MORE INFORMATION OR TO SCHEDULE A TOUR, CONTACT THE LEASING AGENT.



www.cbre.ca

CBRE

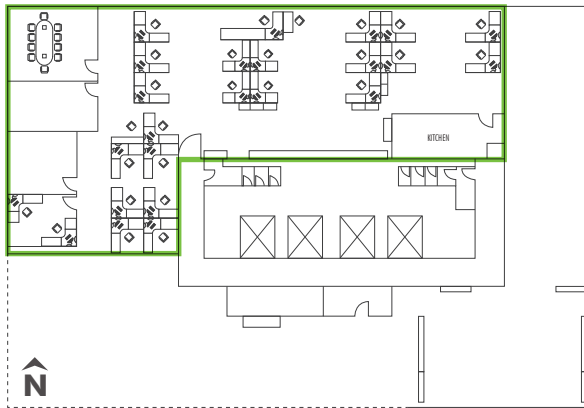


YOUR VIEW

+ Unit 1630 at 1177 West Hastings boasts unobstructed north-facing water and mountain views.



FLOOR PLAN #1630



not to scale



CONTACT US

Zach Wittenberg Personal Real Estate Corporation

T +1 604 662 5158

zachary.wittenberg@cbre.com

This disclaimer shall apply to CBRE Limited, Real Estate Brokerage, and to all other divisions of the Corporation; to include all employees and independent contractors ("CBRE"). The information set out herein, including, without limitation, any projections, images, opinions, assumptions and estimates obtained from third parties (the "Information") has not been verified by CBRE, and CBRE does not represent, warrant or guarantee the accuracy, correctness and completeness of the Information. CBRE does not accept or assume any responsibility or liability, direct or consequential, for the Information or the recipient's reliance upon the Information. The recipient of the Information should take such steps as the recipient may deem necessary to verify the Information prior to placing any reliance upon the Information. The Information may change and any property described in the Information may be withdrawn from the market at any time without notice or obligation to the recipient from CBRE. CBRE and the CBRE logo are the service marks of CBRE Limited and/or its affiliated or related companies in other countries. All other marks displayed on this document are the property of their respective owners. All Rights Reserved. Mapping Sources: Canadian Mapping Services canadamapping@cbre.com; DMTI Spatial, Environics Analytics, Microsoft Bing, Google Earth.

www.cbre.ca

CBRE