

FOR LEASE

Prime Chinatown Full
Floor Office Opportunity

610 Main Street, Vancouver BC



CONTACT ME

ELI APPLEBAUM

Personal Real Estate Corporation
+1 604-662-5164
eli.applebaum@cbre.com

BLAIR QUINN

Personal Real Estate Corporation
+1 604-662-5161
blair.quinn@cbre.com

CBRE



Elevators



Open Office Plan



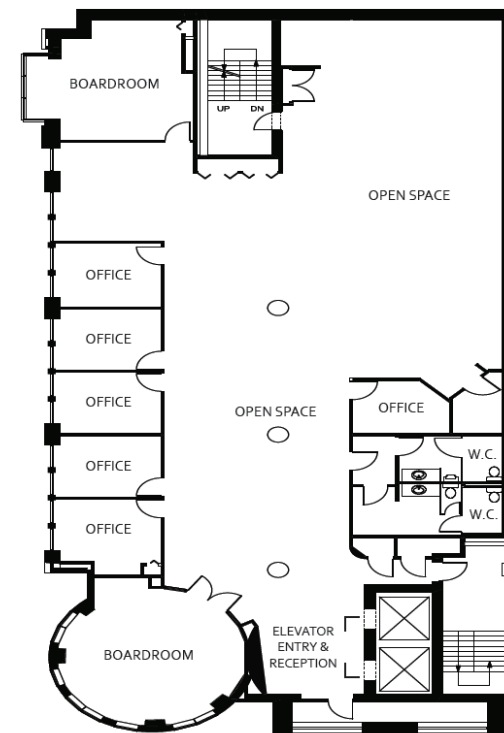
Open Office Plan

PROPERTY DETAILS

Unit	300
Size	6,206 Sq. Ft.
Asking Rent	\$25.00 Per Sq. Ft.
Additional Rent	\$14.12 (2019 est.)
Availability	Immediately
Tenant Improvement Allowance	Negotiable

HIGHLIGHTS

- Prominent full floor office opportunity in the heart of Chinatown
- Large windows with city and North Shore mountain views
- Direct double elevator entry into a generous reception area
- Large boardroom, numerous private offices and open area
- A small private balcony
- Fully distributed HVAC and in-suite washrooms
- Prominent signage potential on Main and Keefer Streets
- Ample underground parking, secure bicycle storage, electric vehicle charging, and end-of-trip facilities including shower and change room
- Excellent transit accessibility and easy access into the downtown core
- Centrally located and in close proximity to Main Street and Stadium SkyTrain stations



Boardroom



Electric Car Charging



Showers

THE LOCATION

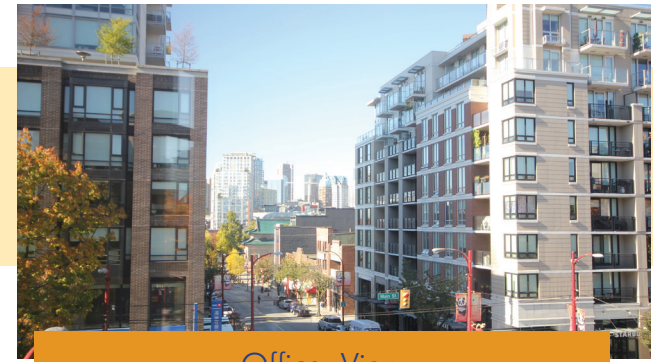
The subject property is located on the southeast corner of Main and Keefer Streets in Vancouver's ever-evolving Chinatown district. This area conveniently links the Gastown and Railtown creative districts to the trendy False Creek Flats and Mount Pleasant areas. Several recent large-scale residential developments are contributing to the neighborhood's rapid growth and repositioning it as an emergent destination for businesses and residents alike.



Balcony View



Street View



Office View

LEGEND



Subject Property



Stadium -Chinatown
SkyTrain Station

Expo Line SkyTrain

3 Main/Downtown Bus
8 Fraser/Downtown Bus
19 Metrotown Station/
Stanley Park Bus



NEARBY AMENITIES

- | | |
|---------------------------------|---------------------------|
| 1. Juke Fried Chicken | 9. Ramen Butcher |
| 2. Juniper | 10. Phnom Penh Restaurant |
| 3. Virtuous Pie | 11. The Union |
| 4. Floata Seafood Restaurant | 12. Propaganda Coffee |
| 5. Keefer Bar | 13. Bao Bei |
| 6. New Town Bakery & Restaurant | 14. Matchstick Coffee |
| 7. Bestie | 15. Starbucks |
| 8. Fat Mao Noodles | 16. Rhinofish Noodle Bar |

CONTACT ME

ELI APPLEBAUM

Personal Real Estate Corporation

+1 604-662-5164 | eli.applebaum@cbre.com

BLAIR QUINN

Personal Real Estate Corporation

+1 604-662-5161 | blair.quinn@cbre.com

CBRE

This disclaimer shall apply to CBRE Limited, Real Estate Brokerage, and to all other divisions of the Corporation; to include all employees and independent contractors ("CBRE"). The information set out herein, including, without limitation, any projections, images, opinions, assumptions and estimates obtained from third parties (the "Information") has not been verified by CBRE, and CBRE does not represent, warrant or guarantee the accuracy, correctness and completeness of the Information. CBRE does not accept or assume any responsibility or liability, direct or consequential, for the Information or the recipient's reliance upon the Information. The recipient of the Information should take such steps as the recipient may deem necessary to verify the Information prior to placing any reliance upon the Information. The Information may change and any property described in the Information may be withdrawn from the market at any time without notice or obligation to the recipient from CBRE. CBRE and the CBRE logo are the service marks of CBRE Limited and/or its affiliated or related companies in other countries. All other marks displayed on this document are the property of their respective owners. All Rights Reserved. Mapping Sources: Canadian Mapping Services canadamapping@cbre.com; DMTI Spatial, Environics Analytics, Microsoft Bing, Google Earth